

**NATIONAL
HEALTH
BOARD**

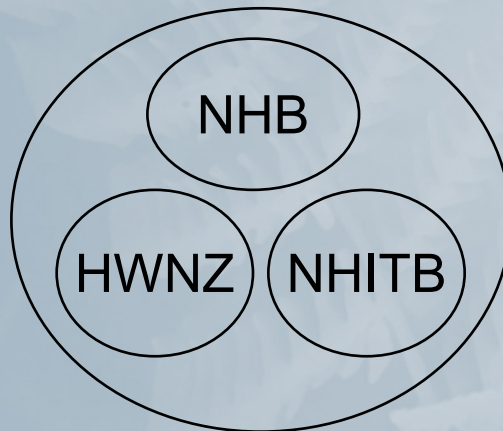
POARI HAUORA Ā-MOTU

A More Unified Health and Disability System

The National Health Board

- **To improve the quality, safety and sustainability of health care, for New Zealanders**
 - a fresh focus, approach and culture to address challenges and drive improvements in frontline health care
 - a more unified health and disability system
- **Engaging clinicians and the wider health workforce in decision making**

The National Health Board



Health Benefits

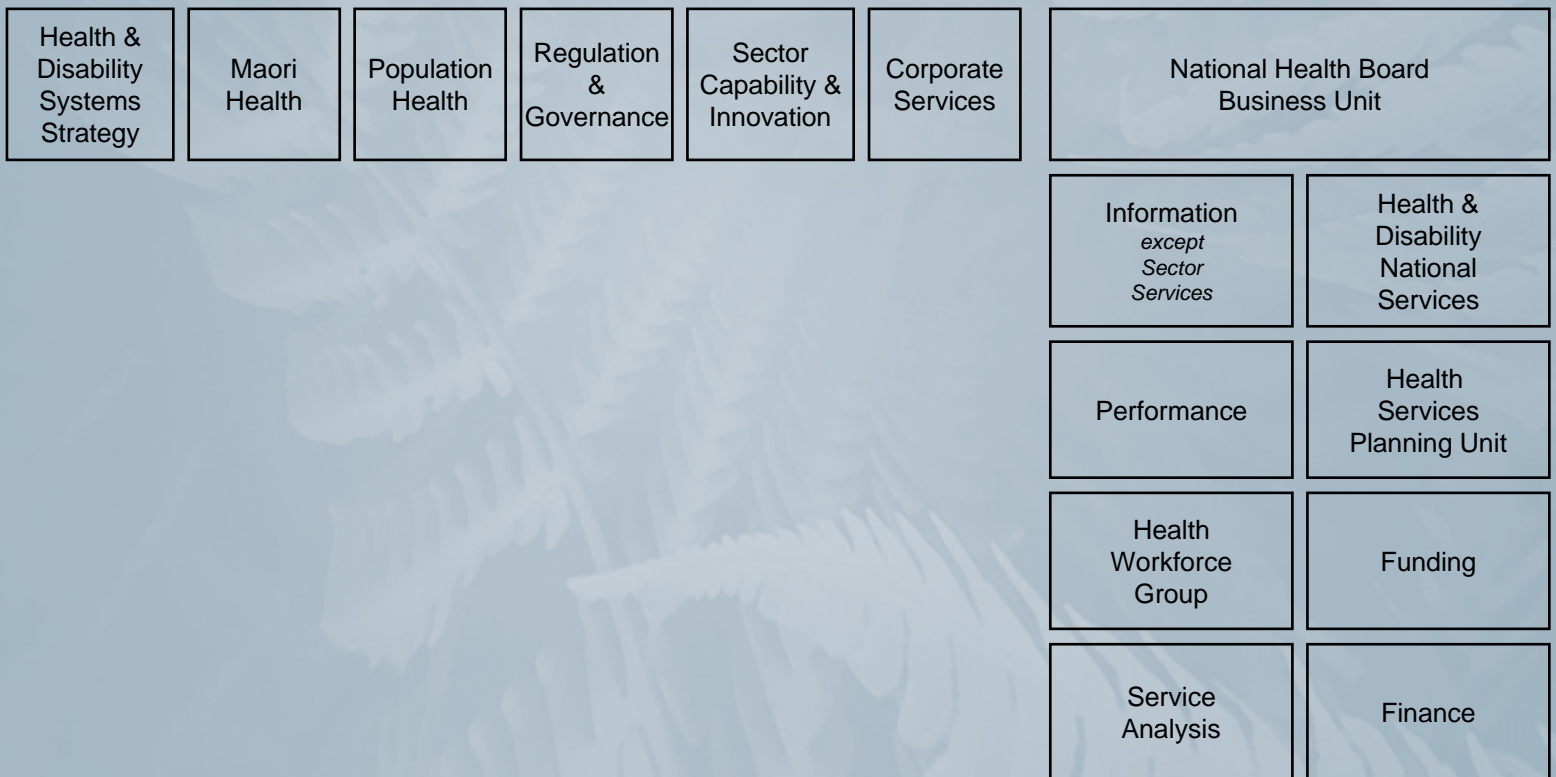
NHC

HQ&SC

Reporting Structure



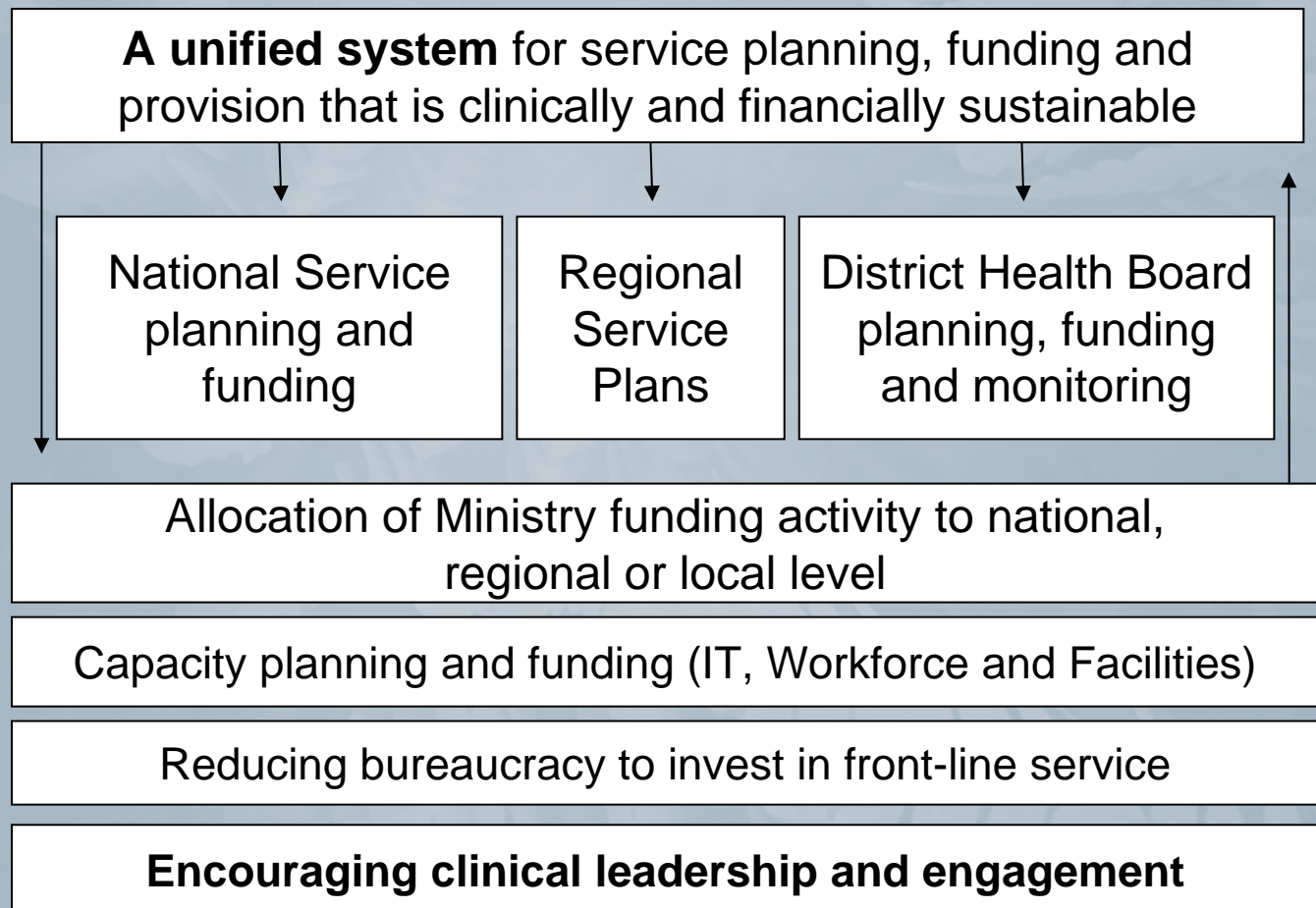
Structure



Terms of Reference

1. Funding, monitoring and planning of DHBs
2. National services
3. Resource capacity development (IT, Facilities/
Capital, Workforce)
4. DHB regional service planning
5. Service planning – national, regional, local
6. Reduce bureaucracy and improve efficiency

Eight priorities for 2010/11



In the 2010/11 Year

- Long Term Health Service Plan
- National services established
- Regional plans in place
- Alignment of NHB, HWFNZ, NHITB, CIC
- Allocating Ministry NDE – nationally, regionally, locally
- Stronger monitoring of hospital efficiency
- Improved sector and clinical engagement